

Marimba User Group

June 2016





Marimba & Raspberry Pi

Comprehensive support for Raspberry Pi



Advanced Cache

OS Management



Marimba and non-Marimba cache

Data Management and Storage



Faster Software Delivery

Advanced cache to allow peers to get data from cache as against servers

Secure

Ensure security on transport and storage

Scalable

Improve success rate through retries. Raise incident on failure.

Raspberry Platform Support



Uniform Management

Supports discovery, software management, compliance, audit and security management



Cache / Repeater

Convert a pi to proxy or a repeater and place in a mid-size environment to save cost of servers



IoT Management

Manage IOT devices, settings, discovery, compliance and analytics using Marimba-Raspberry device



Plug-n-Play

Pre-configured, easy to use



Open Architecture

Allow easy integration with IoT devices for data transport



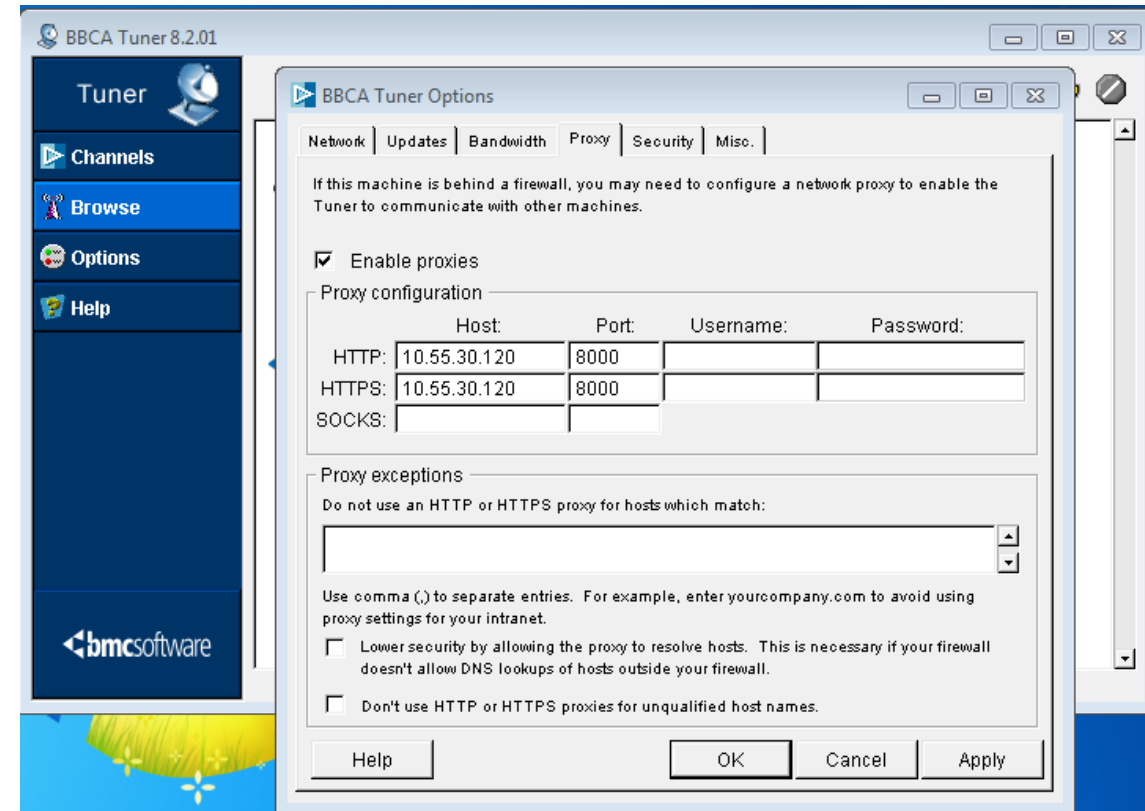
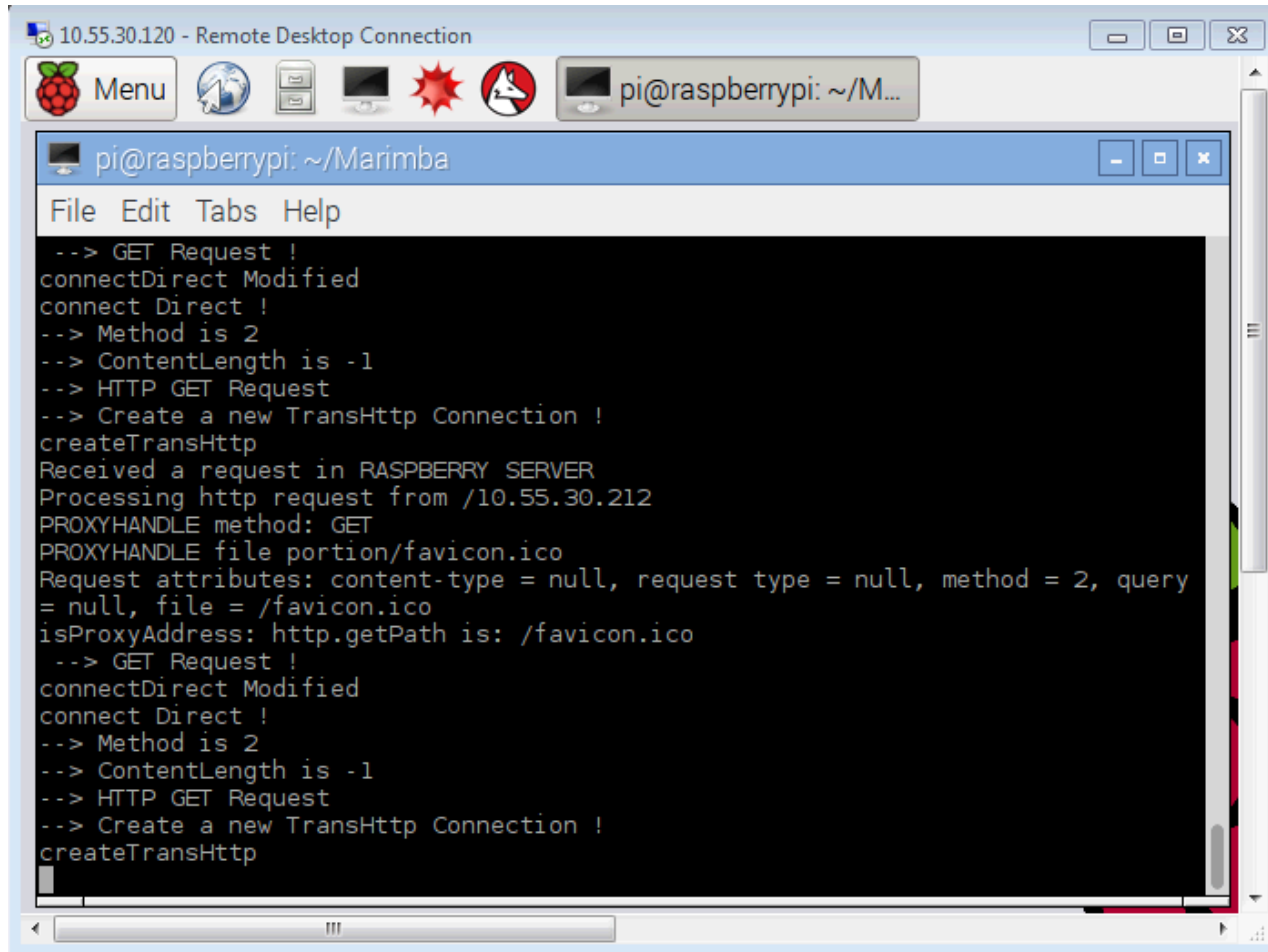
Consistent Delivery

100% reliable and secure



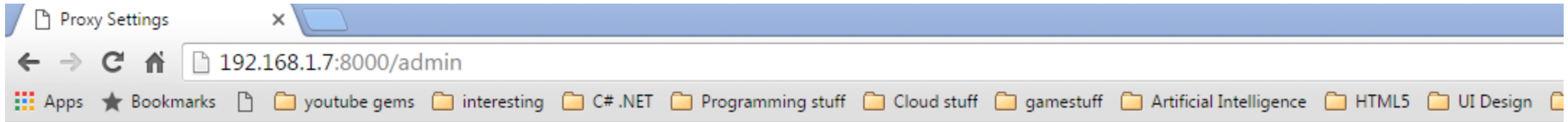


Turn your Pi into a powerhouse! Supports ADP requests like subscribe/updates, scan forwarding, etc.; caches data to reduce WAN traffic





Configure the Pi cache based on your network settings



Marimba on Raspberry Pi: Proxy Configuration

Configuration Setting	Current Value	Change To
Location of this proxy's workspace:	E:\code\depot\ws\build\common\9.0.03\raspberryproxy\dist\proxyroot	<input type="text"/>
Is this port listening with HTTPS protocol?:	false	<input type="text"/>
How many active connections to support?:	4	<input type="text"/>
Where's the cacerts file that contains this proxy's SSL certificate?:	E:\code\depot\ws\build\common\9.0.03\raspberryproxy\dist\cacerts	<input type="text"/>
The main installation folder of this proxy:	E:\code\depot\ws\build\common\9.0.03\raspberryproxy\dist	<input type="text"/>
Change the port the cache is listening on:	8000	<input type="text" value="9000"/>
Is this port listening with HTTP protocol?:	true	<input type="text"/>





Your Data is **Protected**

Supports SSL tunneling



Powered by **Marimba**

Fast, Efficient Data Transfer



Supports any **Use Case**

Firewall access, OS image
caching, normal page
caching



Save on **Cloud Costs**

Reduce traffic on Marimba
Cloud



Demo



Thank You

Send queries to Nitish.Shrivastava@harman.com

