

# Asset Mgmt Meeting Minutes – 9.8.2009

## Meeting Minutes:

1. Upcoming CM-UG Events
2. Dedicated Asset Mgmt Meeting Info
3. User Interaction

## Conference Call Information

All CM-UG calls unless otherwise noted will use the following dial in information:

**Dial in Number = 1-877-537-1634**  
**Conference Code = 255 106 1010**

[View the CM-UG Calendar](#)

[View all Meeting Minutes](#)



CM-UG.com (BMC Marimba Users Group)

# Upcoming CM-UG Events

## Upcoming Events

### **September 2009 User Group Call**

Wednesday September 16th, 2009 - 1PM Eastern / Noon Central

Monthly Feature: (BMC) Virtualization strategy for client management, Self Service Demo (Time permitting)

### **October 2009 User Group Call**

Wednesday October 16th, 2009 - 1PM Eastern / Noon Central

Monthly Feature: Content Replicator Overview/Demo & BCAC & McAfee integration

### *Suggest a topic:*

*If you have a topic you would like to discuss as a monthly feature please*

*send an email to*

[Chris@CM-UG.com](mailto:Chris@CM-UG.com)

## Dedicated Marimba/Asset Mgmt meeting

### › Presentations:

- Anantha Kasetty (BMC) Asset Mgmt Overview
  - [BCAC CMDB Integration.pdf](#)
- Brian Baril (Belmont-SS) – Customer Deployment
  - [BSS-CMUG-ASSET 20090908.ppt](#)
- Chris Armstrong – AIE Documentation / Simple Federation demo
  - [Atrium Integration Engine - What Is It and How Do You Use It.ppt](#)

## Dedicated Marimba/Asset Mgmt meeting

### › Suggested documents from Josh Sirota @ BMC

- BMC Atrium CMDB Enterprise Manager (Version 7.5.00)
- <http://webapps.bmc.com/support/faces/prodversion.jsp?prodverseqid=164354>
  - (Requires BMC support login ID/Pass)

### › 1. BMC Atrium Core 7.5.00 Concepts and Planning Guide

- This guide will cover the philosophy of what belongs in the CMDB, and also covers federation. Page 84 in particular has a section about deciding what to put into your CMDB.

### › 2. Mapping Your Data to BMC Atrium CMDB 7.5.00 Classes

- Doesn't say what you *shouldn't* put into your CMDB, but does give recommendations about where to store the things you do decide to store there.

# Dedicated Marimba/Asset Mgmt meeting

## › Simple federation demo:

- Skip the need for CI Viewer/Federation config, a simple link from Asset View

BMC REMEDY IT SERVICE MANAGEMENT - Asset Management Help

Computer System bmcsoftware

**Quick Links**

- CI Viewer
- View Broadcast
- Functions**
- Advanced Functions
- Create Other Requests
- Consoles

CI Name\* CI Description\*

**CI Information**

CI ID+ <input type="text" value="xxxxxxxxxxxxxx"/>	Company+ <input type="text" value="xxx"/>	Impact <input type="text"/>
Tag Number <input type="text" value="xxxxxxxxxx"/>	Primary Capability <input type="text" value="Not Dedicated"/>	Urgency <input type="text"/>
Serial Number <input type="text" value="xxxxxxx"/>	Capability List <input type="text"/>	Priority <input type="text" value="PRIORITY_5"/>
Part Number <input type="text"/>	System Role <input type="text"/>	Users Affected <input type="text"/>
Supported <input type="text" value="Yes"/>	Status* <input type="text" value="Deployed"/>	Additional Information <input type="text" value="http://CMS:8888/im/m"/>
	Status Reason <input type="text"/>	

GeneralSpecificationsWork InfoContractsPeopleRelationshipsRelationship DetailsFinancialsOutageImpacted Areas

**Product Categorization**

Tier 1	<input type="text" value="Hardware"/>
Tier 2	<input type="text" value="Machine"/>
Tier 3	<input type="text" value="BMC Discovered"/>
Product Name+	<input type="text" value="Latitude D620"/>
Model/Version	<input type="text"/>
Manufacturer	<input type="text" value="Dell Inc."/>

**Location**

Region	<input type="text"/>
Site Group	<input type="text"/>
Site+	<input type="text"/>
Floor	<input type="text"/>
Room	<input type="text"/>

**Lifecycle**

Received Date+	<input type="text"/>
Installation Date+	<input type="text" value="8/30/2009"/>
Available Date+	<input type="text"/>
Return Date+	<input type="text"/>
Disposal Date+	<input type="text"/>
Last Scan Date	<input type="text" value="8/30/2009"/>

# CM-UG.com site updates

## New Features:

## CM-UG Calendar

## All Meeting Minutes

## Custom Google Search - >

Searches only:

- \*.bmc.com/\*
- \*.cm-ug.com/\*
- \*.appdeploy.com/\*
- \*.belmont-ss.com/\*
- \*.deploymentforum.com/\*

\*Suggest Others? - [Chris@cm-ug.com](mailto:Chris@cm-ug.com)

**www.CM-UG.com**  
Configuration Management - User Group (formerly *MUG - Marimba User Group*)

Homepage   Forums   Resources   About Us   Get Connected

### Welcome to the Configuration Management User Group!

The Configuration Management User Group was created to provide an organization for those who use BMC CM product. The BMC Configuration Management product, formerly known as Marimba provides policy based deployments and inventory. Please feel free to check the [calendar](#) and dial into our next call.

Google™ Custom Search   Search

Chris Armstrong: September, 2009

**Meeting Information**

- User Group Calendar

**Discussion Topics**

- Marimba Core Infrastructure

## CM-UG - User Interaction

- › User Email Group = [Members@CM-UG.com](mailto:Members@CM-UG.com),
  - Members receive all meeting invites, questions, etc.
  - Please email me to ensure you are added – [Chris@CM-UG.com](mailto:Chris@CM-UG.com)

- › LinkedIn Group = <http://www.linkedin.com/groups?gid=1774296>



CM-UG.com (BMC Marimba Configuration Management - Users Group) is visible on your profile. [Change visibility](#).

- › Facebook Group = <http://www.facebook.com/home.php#/group.php?gid=51240831346>

facebook

Home

Profile

Friends

Inbox



CM-UG.com (Marimba Users Group)

Global

## CM-UG - User Interaction

### › Developer.BMC.com

Please register an account on the new BMC developer network.

These forums are very nice and provide a single place now for all BMC products.

- BMC Marimba Forums : [http://developer.bmc.com/communities/community/bmc\\_service\\_automation](http://developer.bmc.com/communities/community/bmc_service_automation)

The screenshot shows the BMC Developer Network interface. At the top, there is a navigation bar with the BMC Software logo, a welcome message for a guest, and links for login and registration. Below this is a breadcrumb trail: BMC.com | BMC Developer Network > Service Automation. The main heading is 'Service Automation' with a globe icon. A secondary navigation bar includes tabs for 'Overview', 'All Content (42)', 'Documents (0)', and 'Blog Posts (38)'. On the left side, there is a 'Communities' sidebar listing several categories: Server Configuration Automation (BladeLogic), Server Configuration Automation (Marimba), Client Configuration Automation, Network Configuration Automation, and Configuration Discovery. Below the sidebar is a 'Top Participants' section listing Chris Armstrong, pseagers, and Gordon Mckeown, each with a star rating. The main content area features a 'BMC Service Automation Community' section with a welcome message and a description of the community's purpose. Below that is a 'Recent Activity' section showing a list of replies to a post titled 'deploying the tuner through Windows Active Directory' in the 'Server Configuration Management' forum, with timestamps ranging from 6 to 8 hours ago.



## CM-UG - User Interaction

Please take a few minutes to complete the CM-UG survey below.

- This information will be made available only to the members of the CM-UG.
- Consider using a personal e-mail account such as Gmail rather than your corporate email if necessary
- Do not share any information you are not comfortable sharing.


<http://www.cm-ug.com/survey/survey.php?sid=28>

Survey #28: CM-UG Member Infrastructure Survey

File Edit View Favorites Tools Help

Back Search Favorites Go

Address <http://www.cm-ug.com/survey/survey.php?sid=28>

  
Back to CM-UG.com Homepage

**CM-UG.com Survey**

Survey #28: CM-UG Member Infrastructure Survey

Page 1 of 3

1. [\*] Your e-mail address.

2. Are you willing to be contacted by fellow CM-UG members?

Yes

No

<< Previous Page      Next Page >>

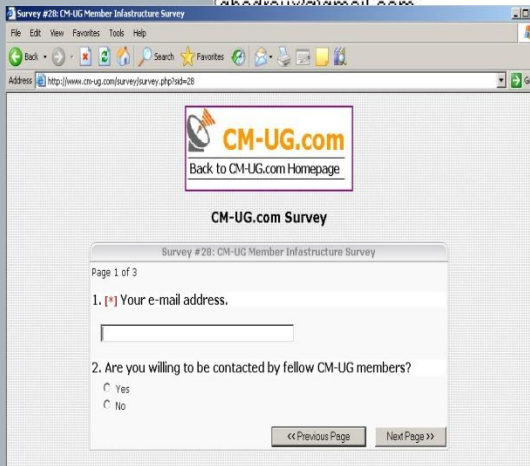
# CM-UG - User Interaction

## CM-UG survey sample data:

Sample data from CM-UG Survey below

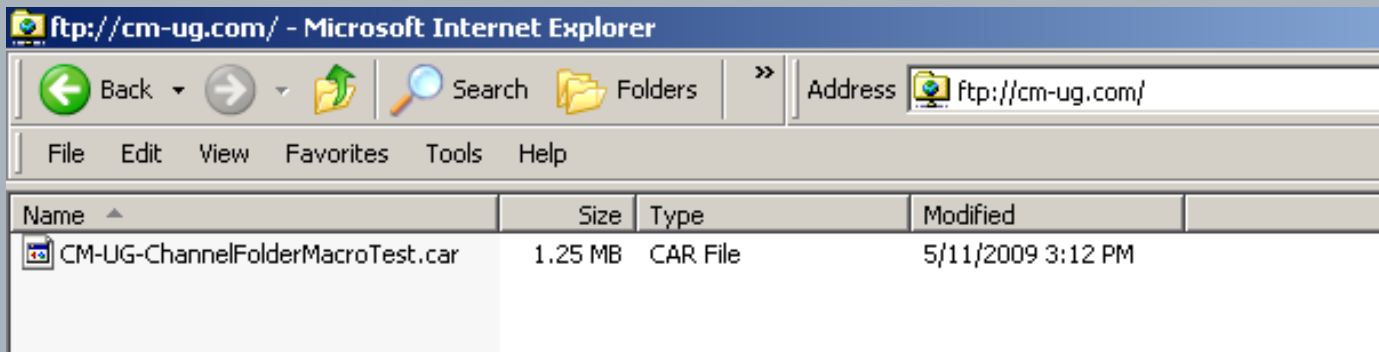
Download the latest survey here: <http://www.cm-ug.com/survey.xls>

Your e-mail address.	Are you willing to be contacted by fellow CM-UG members?	Select the Configuration Management (Marimba) version in your environment?	Approximate number of Tuners your environment supports.	Select the components used in your environment.	What platform(s) are the majority of your Tuners on?
chris@cm-ug.com	Yes	7.x	30000	Repeaters, Mirrors	Windows XP Professional
chadrow@gmail.com	Yes	7.x	1500	Mirrors, Repeaters	Windows 2000 Professional, Windows XP Professional, Wind
	Yes	7.x	31000+	Mirrors, Repeaters, Proxies	Windows XP Professional
	Yes	7.x	13,000	Mirrors, Repeaters, Proxies	Windows XP Professional
	Yes	7.x	14500	Mirrors, Repeaters	Windows XP Professional
	Yes	7.x	60,000	Mirrors, Repeaters	Windows XP Professional, Linux, AIX, HP-UX
	Yes	6.x	4500	Mirrors, Proxies	Windows NT, Windows 2000 Professional, Windows XP Profes
	Yes	7.x	15000	Mirrors, Repeaters	Windows 2000 Professional, Windows XP Professional
	Yes	7.x	45000	Mirrors, Proxies, Reverse Proxies	Windows XP Professional, Solaris, AIX
	Yes	7.x	4000	Mirrors, Repeaters	Windows NT, Windows XP Professional, Windows Vista
	Yes	6.x	5		Windows XP Professional
	Yes	7.x	10,000	Mirrors, Repeaters	Windows 2000 Professional, Windows XP Professional, Wind
	Yes	7.x	4000	Mirrors, Repeaters, Proxies	Windows XP Professional



## CM-UG FTP Site:

- › CM-UG FTP Site:
  - **Please use this site for Marimba related files only such as:**
    - CAR Files
    - VBS Files
    - EXE Files
    - Other samples or files which are hard to email..



### CM-UG FTP Details

- URL - <ftp://cm-ug.com/>
- Username - cmugusers
- Password - Marimba2009